

**LOW LEAD COMPLIANT  
 2 PC FULL PORT 600 WOG  
 w/ ISO MOUNTING PAD**

**Features:**

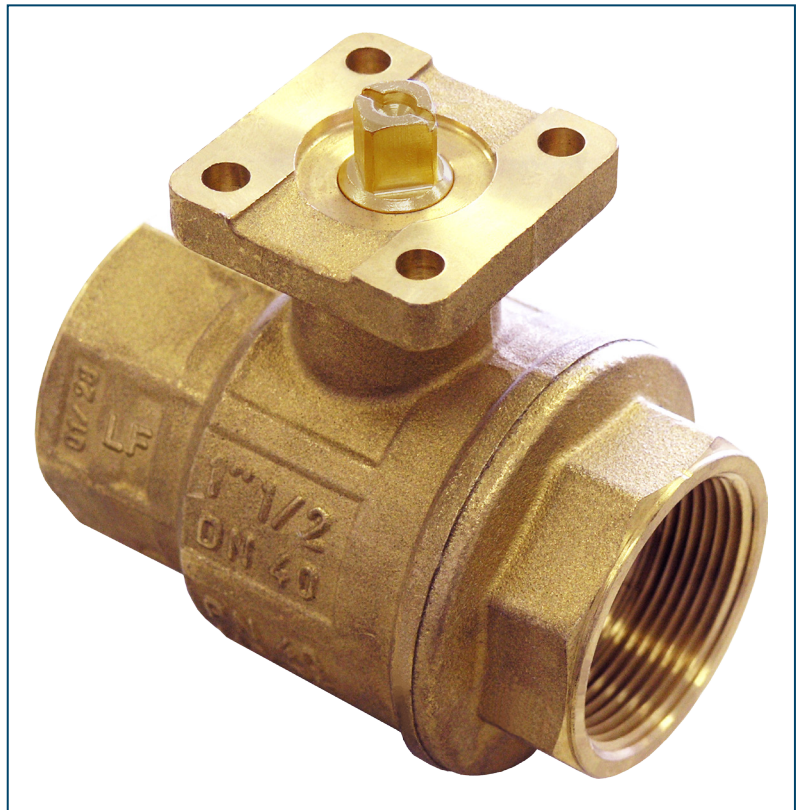
- 600 WOG
- 150 PSI WSP
- Full Port
- NSF 61 Annex G Certified (UL) (Annex G references NSF 372)
- Blow-out Proof Stem
- Double Viton® O-ring Stem Seal with Additional PTFE Seal
- Threaded NPT Ends
- Forged Brass Body & End Cap
- Viton® O-ring Backed Seats for Reduced Operating Torque
- Mounting Pad for Direct Mount Actuation
- 100% Electronically Tested in Open & Closed Position at 80 PSI
- Sizes 1/2" to 2"

**Standards:**

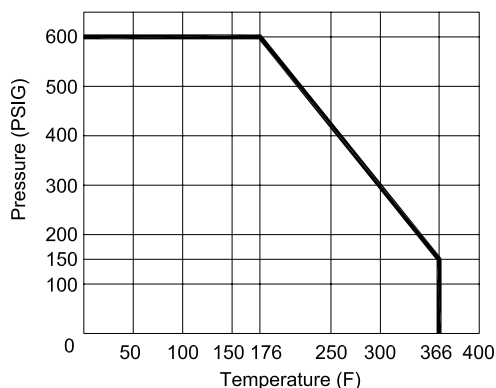
- Design: MSS SP-110\*
- End Connections: ANSI B1.20.1
- Seat/Shell Test: MSS SP-110
- Mounting Pad: ISO 5211

\* The specification MSS SP-110 addresses valves design with handles. The X440 does not include a handle. Other than this exception, the valve meets the design criteria of the specification.

**NOT FOR USE AT OR BELOW GROUND LEVEL**



Low Lead Compliant: Referring to laws defining "Lead Free" as wetted surface of pipe, fittings and fixtures in potable water systems that have a weighted average lead content ≤ 0.25% per the Safe Drinking Water Act (Sec. 1417) amended 1-4-2011 as well as other state regulations.



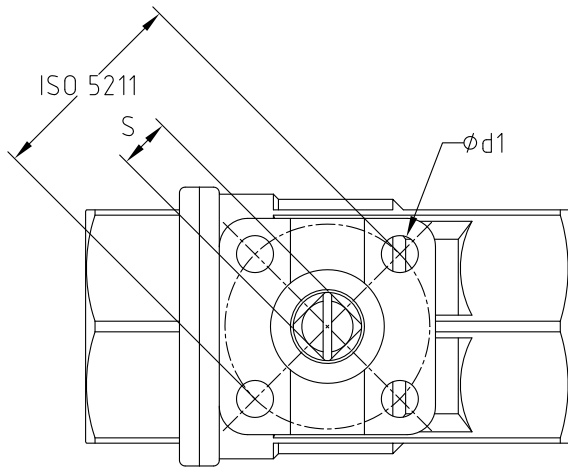
**Cv, Torque & Weight**

Size	Cv	Torque (in-lbs)	Wt (lbs)
1/2	19	52	1.0
3/4	19	52	1.0
1	34	52	1.6
1-1/4	50	52	2.2
1-1/2	268	154	4.3
2	309	154	5.6

**Figure Number Matrix**

FNW X440 Size	
SIZE CODE	
1/2 = D	1-1/4 = H
3/4 = F	1-1/2 = J
1 = G	2 = K

## LOW LEAD COMPLIANT 2 PC FULL PORT 600 WOG w/ ISO MOUNTING PAD

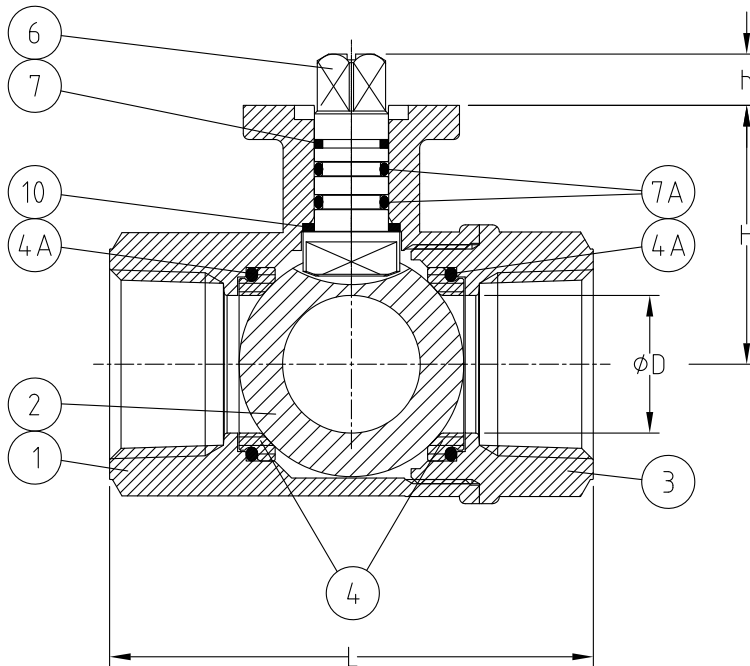


### Standard Materials

Ref. No.	Description	Material	Qty
1	Body	Brass CW 510L	1
2	Ball	Brass CW 510L (TEA Plated)	1
3	End Cap	Brass CW 510L	1
4	Seat	PTFE	2
4A	Seat Backing O-ring	FKM (Viton®)	2
6	Stem	Brass CW 510L	1
7	Stem Seal	PTFE	1
7A	Stem O-ring	FKM (Viton®)	2
10	Thrust Washer	PTFE	1

### Dimensions (inches)

SIZE	$\phi D$	L	H	h	S	ISO 5211	$\phi d1$
1/2	0.56	2.64	1.28	0.35	0.354	1.42/F03	0.24
3/4	0.75	3.00	1.36	0.35	0.354	1.42/F03	0.24
1	0.95	3.35	1.79	0.35	0.354	1.42/F03	0.24
1-1/4	1.18	3.66	1.93	0.35	0.354	1.42/F03	0.24
1-1/2	1.49	4.13	2.52	0.43	0.433	1.97/F05	0.27
2	1.97	4.80	2.88	0.43	0.433	1.97/F05	0.27



DOC: FNWX44013 Ver. 10/2013

© 2013 - FNW. All rights reserved.

The FNW logo is a trademark of Ferguson Enterprises, Inc., PL Sourcing, PO Box 2778, Newport News, VA 23609

The contents of this publication are presented for information purposes only, and while effort has been made to ensure their accuracy, they are not to be construed as warranties or guarantees, expressed or implied, regarding the products or services described herein or their use or applicability. All sales are governed by our terms and conditions, which are available on request. We reserve the right to modify or improve the designs or specifications of our products at any time without notice. Always verify that you have the most recent product specifications or other documentation prior to the installation of these products.