

SPECIFICATIONS

FIGURE 561 CARBON STEEL VALVES



150# CARBON STEEL GLOBE VALVE

FEATURES

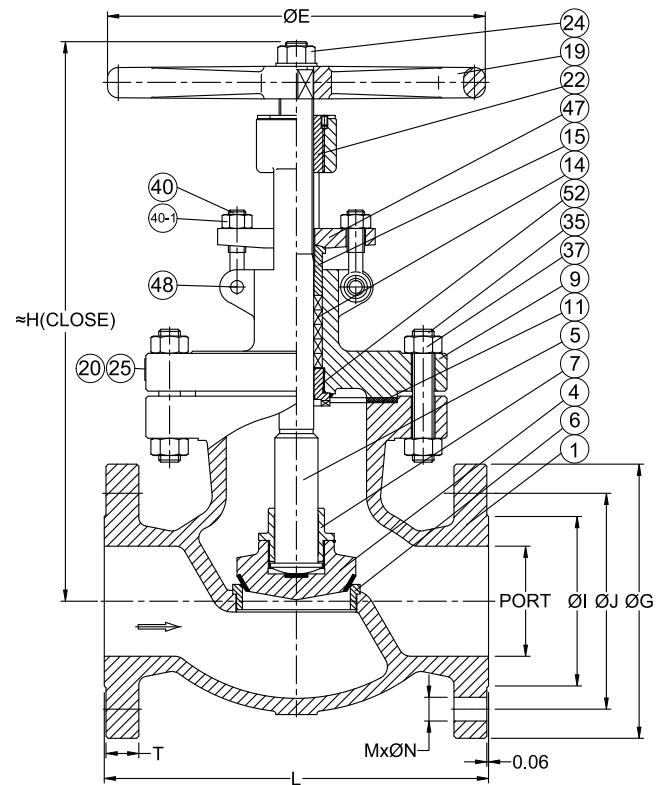
- Conical seat design
- Round bonnet with integral yoke
- Outside screw and yoke, rising stem design
- Seat face stellite, ground and lapped to a mirror finish, conical seat machined to 8 RMS
- Universal trim-13 Cr stem, wedge 13 Cr face and stellite seat API trim 8 suitable for applications up to 850°F (454°C)
- Body and bonnet joint accurately machined, full enclosed gasket
- Pressure testing according to API 598

PRODUCT SPECIFICATIONS

- Valve design according to BS 1873
- Shell wall Thickness according to BS 1873
- Pressure-temperature rating according to ASME/ANSI B16.34
- Material according to ASTM
- Face to Face according to ASME/ANSI B16.10
- Flanged dimension according to ASME/ANSI B16.5

MATERIALS: SIZES 2" – 6"

| No. | Part Name | Material |
|------|---------------|-------------------------------|
| 1 | BODY | ASTM A216 GR.WCB |
| 4 | DISC | ASTM A105N / A216 GR.WCB+13Cr |
| 5 | STEM | ASTM A182 GR F6a |
| 6 | SEAT RING | ASTM A105N+STL#6 |
| 7 | DISC NUT | ASTM A276 TYPE 410 |
| 9 | BONNET | ASTM A216 GR.WCB |
| 11 | GASKET | SPW SS304+GRAPHITE |
| 14 | STEM PACKING | GRAPHITE |
| 15 | GLAND | ASTM A276 TYPE 410 |
| 19 | HANDWHEEL | DUCTILE IRON |
| 20 | RIVET | SS304 |
| 22 | STEM NUT | ASTM A439 GR.D-2 |
| 24 | HANDWHEEL NUT | ASTM A29 TYPE 1025 |
| 25 | NAMEPLATE | SS304 |
| 35 | BODY STUD | ASTM A193 GR.B7 |
| 37 | BOLT NUT | ASTM A194 GR.2H |
| 40 | EYE BOLT | ASTM A193 GR.B7 |
| 40-1 | EYE BOLT NUT | ASTM A194 GR.2H |
| 47 | GLAND FLANGE | ASTM A216 GR.WCB |
| 48 | PIN | ASTM A29 TYPE 1025 |
| 52 | BACK SEAT | ASTM A276 TYPE 410 |



DIMENSIONS

| Item No. | Size | Port | L | H(CLOSE) | O1 | OJ | OG | OE | T | M | ON |
|----------|--------|------|-------|----------|------|------|-------|-------|------|---|-----|
| FNW561K | 2" | 2.01 | 8.00 | 12.20 | 3.62 | 4.75 | 6.00 | 7.87 | 0.56 | 4 | 3/4 |
| FNW561L | 2-1/2" | 2.52 | 8.50 | 13.39 | 4.12 | 5.50 | 7.00 | 9.84 | 0.62 | 4 | 3/4 |
| FNW561M | 3" | 2.99 | 9.50 | 13.78 | 5.00 | 6.00 | 7.50 | 9.84 | 0.69 | 4 | 3/4 |
| FNW561P | 4" | 4.02 | 11.50 | 16.93 | 6.19 | 7.50 | 9.00 | 11.81 | 0.88 | 8 | 3/4 |
| FNW561U | 6" | 5.98 | 16.00 | 18.70 | 8.50 | 9.50 | 11.00 | 13.78 | 0.94 | 8 | 7/8 |

