

SPECIFICATIONS

FIGURE 551 CARBON STEEL VALVES



150# CARBON STEEL OS&Y GATE VALVE WITH FLEXIBLE WEDGE DISC

FEATURES

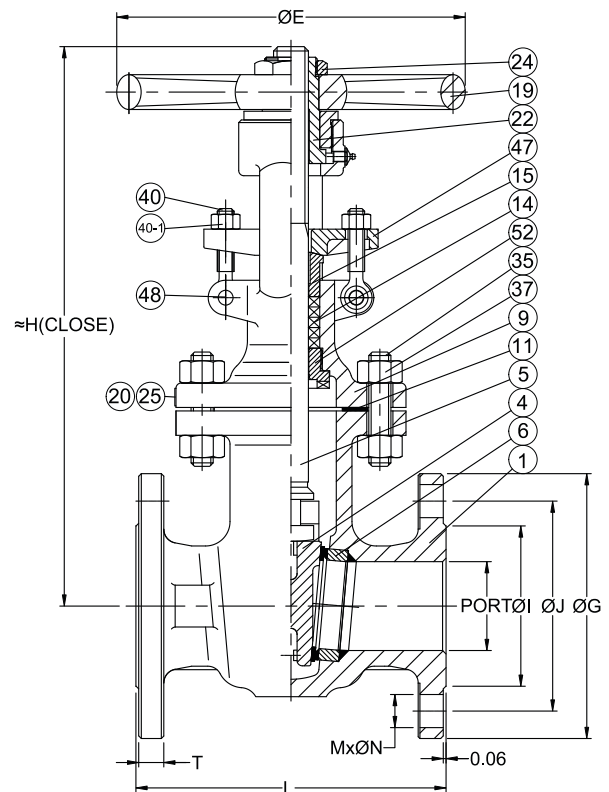
- Flexible wedge
- Seal welded seats
- Outside screw and yoke, rising stem design, non-rising hand wheel
- Seat face stellited, ground and lapped to a mirror finish
- Universal trim-13 Cr stem, wedge 13 Cr face and stellited seat API trim 8 suitable for applications up to 850°F (454°C)
- Body and bonnet joint accurately machined, full enclosed gasket

PRODUCT SPECIFICATIONS

- Shell wall thickness: 2"–24": API 600
- Pressure-temperature rating according to ASME/ANSI B16.34
- Material according to ASTM
- Face to seat according to ASME/ANSI B16.10
- End flanges: 2"–24": ASME/ANSI B16.5
- Pressure testing according to API598

MATERIALS: SIZES 2" – 12"

No.	Part Name	Material
1	BODY	ASTM A216 GR.WCB
4	WEDGE	ASTM A216 GR.WCB+13Cr
5	STEM	ASTM A182 GR F6a
6	SEAT RING	ASTM A105N+STL#6
9	BONNET	ASTM A216 GR.WCB
11	GASKET	SS304+GRAPHITE
14	STEM PACKING	GRAPHITE
15	GLAND	ASTM A276 TYPE 410
19	HANDWHEEL	DUCTILE IRON
20	RIVET	SS304
22	STEM NUT	ASTM A439 GR.D-2
24	HANDWHEEL NUT	ASTM A29 TYPE 1025
25	NAMEPLATE	SS304
35	BODY BOLT	ASTM A193 GR.B7
37	BOLT NUT	ASTM A194 GR.2H
40	EYE BOLT	ASTM A193 GR.B7
40-1	EYE BOLT NUT	ASTM A194 GR.2H
47	GLAND FLANGE	ASTM A216 GR.WCB
48	PIN	ASTM A29 TYPE 1025
52	BACK SEAT	ASTM A276 TYPE 410



DIMENSIONS

Item No.	Size	Port	L	H(CLOSE)	O1	OJ	OG	OE	T	M	ON
FNW551K	2"	2.01	7.00	12.20	3.62	4.75	6.00	7.87	0.56	4	3/4
FNW551L	2-1/2"	2.52	7.50	14.17	4.12	5.50	7.00	7.87	0.62	4	3/4
FNW551M	3"	2.99	8.00	14.57	5.00	6.00	7.50	9.84	0.69	4	3/4
FNW551P	4"	4.02	9.00	17.09	6.19	7.50	9.00	9.84	0.88	8	3/4
FNW551U	6"	5.98	10.50	22.83	8.50	9.50	11.00	11.81	0.94	8	7/8
FNW551X	8"	7.99	11.50	28.74	10.62	11.75	13.50	13.78	1.06	8	7/8
FNW55110	10"	10.00	13.00	34.02	12.75	14.25	16.00	15.75	1.12	12	1
FNW55112	12"	12.01	14.00	39.96	15.00	17.00	19.00	17.72	1.19	12	1

