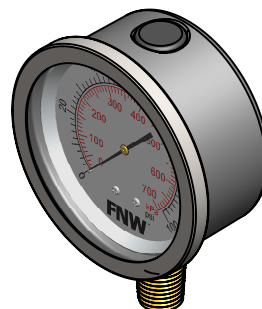


Ambient Temperature Limits:
 -4°F to 150°F (-20°C to 65°C)
 Process Temperature Limits:
 -4°F to 150°F (-20°C to 65°C)

Case: 304SS
 Ring: 304SS, Crimp-On
 Lens: Polycarbonate
 Dial: Aluminum
 Bourdon Tube: Ph Bz
 Movement: Brass
 Socket: Brass
 Socket Gasket & Fill Plug: Buna N
 Lens Gasket (non-wetted): Silicone
 Accuracy: $\pm 1.5\%$ of Full Scale
 Enclosure Rating: IP65
 Fill: Glycerin



Pressure Ranges

- 0 - 30
- 0 - 60
- 0 - 100
- 0 - 160
- 0 - 200
- 0 - 300

| | | |
|---|---------------|---|
| FNW™ | | 4120 NE Columbia Blvd Portland, OR 97211 Phone (503)287-8383 Fax (503)281-9677 |
| TITLE/DESCRIPTION Figure LFG 2.5" Liquid Filled Gauge Bottom Connection | | |
| DATE: 9-24-2009 | BY: PEA | NUMBER: FNWLFG |
| REV: 1 : 1-14-2013 | APVD: KMC | |
| CONFIDENTIAL AND PROPRIETARY INFORMATION BELONGING TO FNW VALVE, SUBMITTED FOR THE LIMITED PURPOSE OF PROVIDING INFORMATION ON PRODUCTS AND SYSTEMS. BY RECEIVING THIS DOCUMENT, YOU AGREE NOT TO DISCLOSE SUCH INFORMATION TO OTHERS EXCEPT BY WRITTEN PERMISSION OF FNW VALVE. | | |
| UNITS: INCHES | SCALE: NTS | PAGE 1 OF 1 |