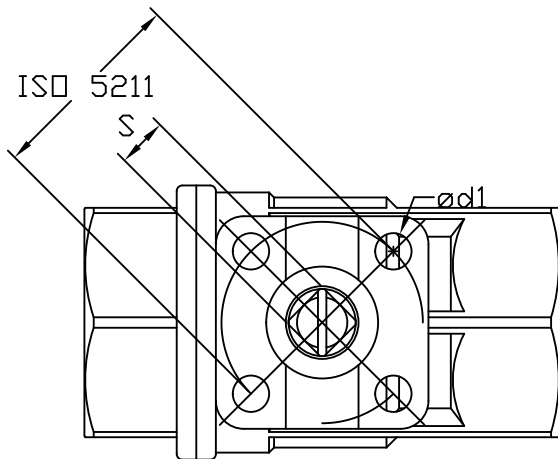
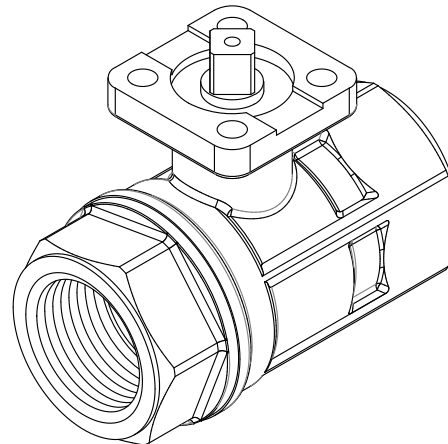


Ref No.	Description	Material	Qty
1	Body	Brass CW 510L	1
2	Ball	Brass CW 510L (TEA Plate)	1
3	End Cap	Brass CW 510L	1
4	Seat	PTFE	2
4A	Seat Backing O-ring	FKM (Viton)	2
6	Stem	Brass CW 510L	1
7	Stem Seal	PTFE	1
7A	Stem O-ring	FKM (Viton)	2
10	Thrust Washer	PTFE	1



SI à	ϕD	L	H	h	S	ISO 5211	$\phi d1$
1/2	0.56	2.64	1.28	0.36	0.364	1.42/F03	0.24
3/4	0.75	3.00	1.36	0.36	0.364	1.42/F03	0.24
1	0.96	3.35	1.79	0.36	0.364	1.42/F03	0.24
1-1/4	1.18	3.66	1.93	0.36	0.364	1.42/F03	0.24
1-1/2	1.49	4.13	2.62	0.43	0.433	1.97/F05	0.27
2	1.97	4.80	2.88	0.43	0.433	1.97/F05	0.27



FNW	4120 NE Columbia Blvd Portland, OR 97211 Phone (503) 287-8383 Fax (503) 281-9677	
	TITLE/DESCRIPTION: X440 ISO MOUNT LEAD FREE CERTIFIED BRASS BALL VALVE WITH NPT CONNECTIONS	
DATE: 8-28-2013	BY:	UNITS: INCHES
SCALE: NONE	APP'D:	PAGE(S): 1
MODEL: X440		
DWG NO: X440_050-2		
NOTES: UL CERTIFIED TO ANSI/NSF 61-8 ANNEX G (ANNEX G REFERENCES ANSI/NSF 372)		
FILE: 440_050-2.dwg	WT:	LOC: PORTLAND
PAGE SIZE: 8.5 x 11L	REV: 0	RDATE:
THIS DRAWING CONTAINS CONFIDENTIAL AND PROPRIETARY INFORMATION OF FNW VALVE AND IS SUBMITTED TO YOU FOR THE LIMITED PURPOSE OF PROVIDING YOU INFORMATION ON PRODUCTS AND SYSTEMS PURCHASED FROM FNW VALVE. BY RECEIVING THIS DOCUMENT, YOU AGREE NOT TO DISCLOSE SUCH INFORMATION TO OTHERS EXCEPT BY WRITTEN PERMISSION OF FNW VALVE.		