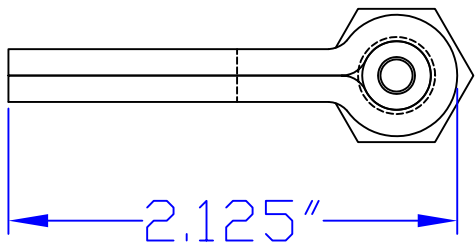
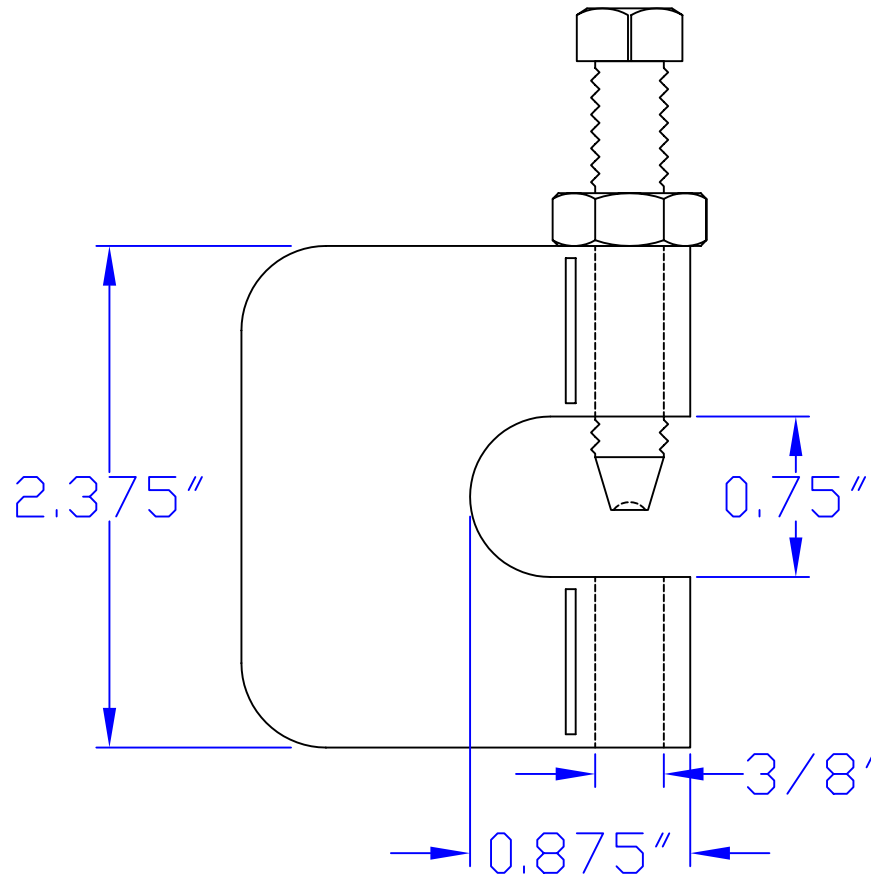


| | |
|------------------|--------------------|
| ROD SIZE | 3/8" UNC |
| MAX. LOAD | 400 LBS. |
| MATERIAL | STEEL |
| STANDARD | A283 Grade A, B, C |



| | | |
|--|---------|---|
| FNW™ | | 4120 NE Columbia Blvd Portland, OR 97211 Phone (503) 287-8383 Fax (503) 281-9677 |
| TITLE/DESCRIPTION: MI C-CLAMP - 400 LBS. LOAD CAPACITY | | |
| DATE: 7-11-2006 | BY: PEA | UNITS: INCHES |
| SCALE: NONE | APPD: | PAGE(S): 1 |
| MODEL: 7201 | | |
| DWG NO: 7201 | | |
| NOTES: | | |
| FILE: FNW7201.dwg | WT: | LOC: PORTLAND |
| PAGE SIZE: 8.5 x 11L | REV: 0 | RDATE: |
| THIS DRAWING CONTAINS CONFIDENTIAL AND PROPRIETARY INFORMATION OF FNW VALVE AND IS SUBMITTED TO YOU FOR THE LIMITED PURPOSE OF PROVIDING YOU INFORMATION ON PRODUCTS AND SYSTEMS PURCHASED FROM FNW VALVE. BY RECEIVING THIS DOCUMENT, YOU AGREE NOT TO DISCLOSE SUCH INFORMATION TO OTHERS EXCEPT BY WRITTEN PERMISSION OF FNW VALVE. | | |