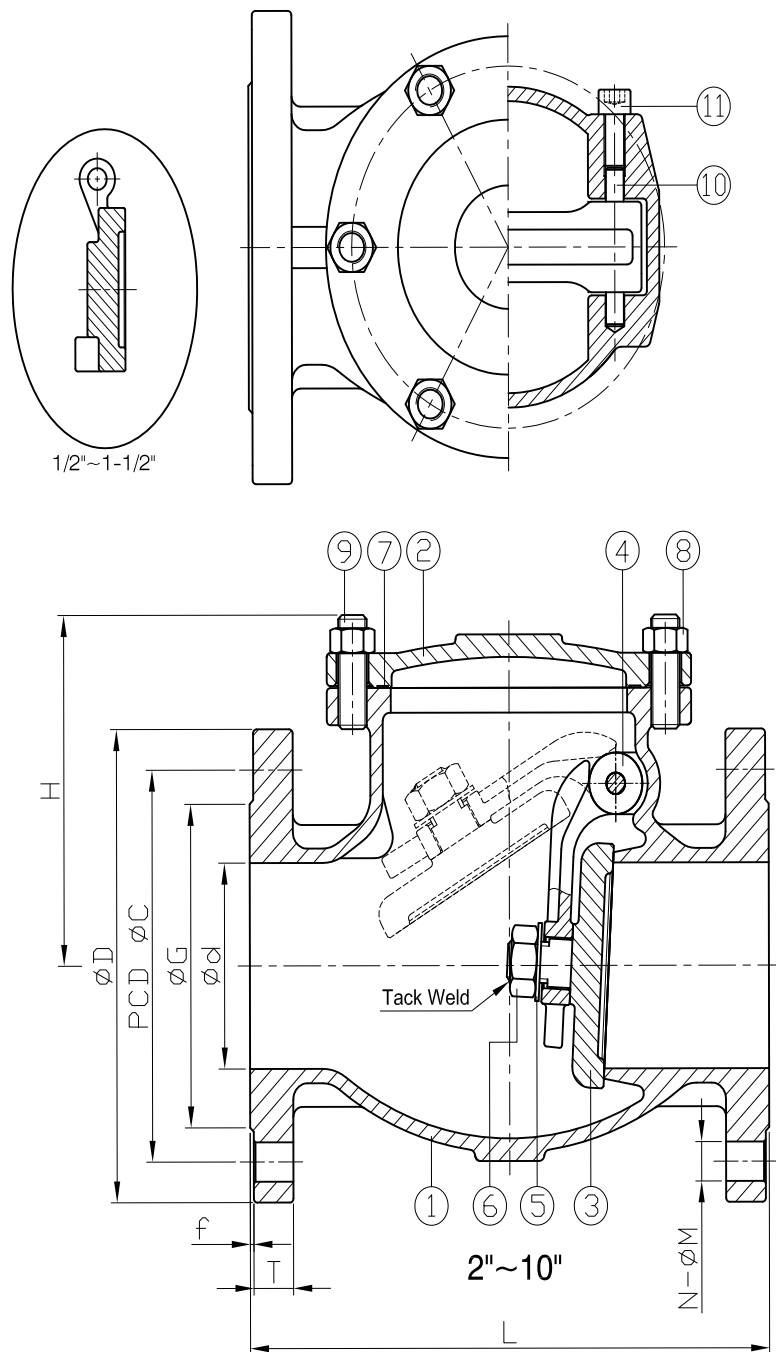


Figure 472A

## 300# Stainless Steel Swing Check Valve



**NOTES:**

CF8M Seat is Integral to body  
 Investment Cast Body up to 8"  
 Design per API 603  
 Pressure/Temperature Rating per ANSI B16.34  
 Flange Dimensions per ANSI B16.5  
 Face to Face Dimensions per ANSI B16.10  
 Pressure Tested per API 598

No.	Parts	Material
1	Body	ASTM A351-CF8M
2	Bonnet	
3	Disc	
4	Hinge	
5	Flat Washer	AISI 316
6	Nut	
7	Body Seal	PTFE
8	Nut	ASTM A194-8
9	Stud	ASTM A193-B8
10	Pin	AISI 316
11	Socket Hexagon Screw	

**Dimensions (inches) & Weights (lbs)**

Size	2	3	4	6
<b>d</b>	1.97	3.15	3.94	5.91
<b>L</b>	10.51	12.52	14.02	17.48
<b>H</b>	5.08	6.46	6.97	9.09
<b>Flange Dimensions</b>	<b>f</b>	0.08	0.08	0.08
	<b>D</b>	6.50	8.27	10.04
	<b>G</b>	3.63	5.00	6.19
	<b>C</b>	5.00	6.63	7.87
	<b>T</b>	0.81	1.06	1.19
	<b>N</b>	8.00	8.00	8.00
	<b>M</b>	0.75	0.88	0.88
<b>Wt. (lbs.)</b>	31.5	55.8	101.4	177.9



**Title:** 300# Stainless Steel Swing Check Valve

**Date:** 8-25-15

**By:** Ca

**App'd:** Mike

**Units:** In.

**Scale:** None

**Rev Date:**

**File:** 472A.pdf

**Model:** 472A

**DWG NO:**

**Rev: 0**

THIS DRAWING CONTAINS CONFIDENTIAL AND PROPRIETARY INFORMATION OF FNW VALVE AND IS SUBMITTED TO YOU FOR THE LIMITED PURPOSE OF PROVIDING YOU INFORMATION ON PRODUCTS AND SYSTEMS PURCHASED FROM FNW VALVE. BY RECEIVING THIS DOCUMENT, YOU AGREE NOT TO DISCLOSE SUCH INFORMATION TO OTHERS EXCEPT BY WRITTEN PERMISSION.