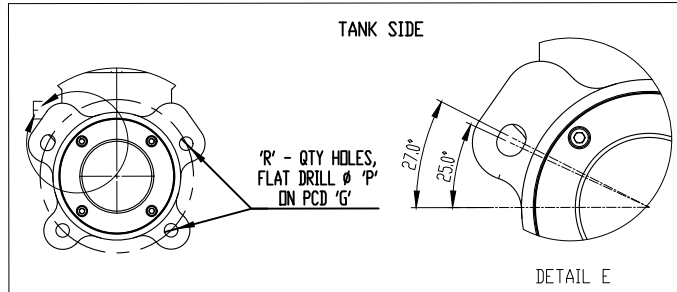
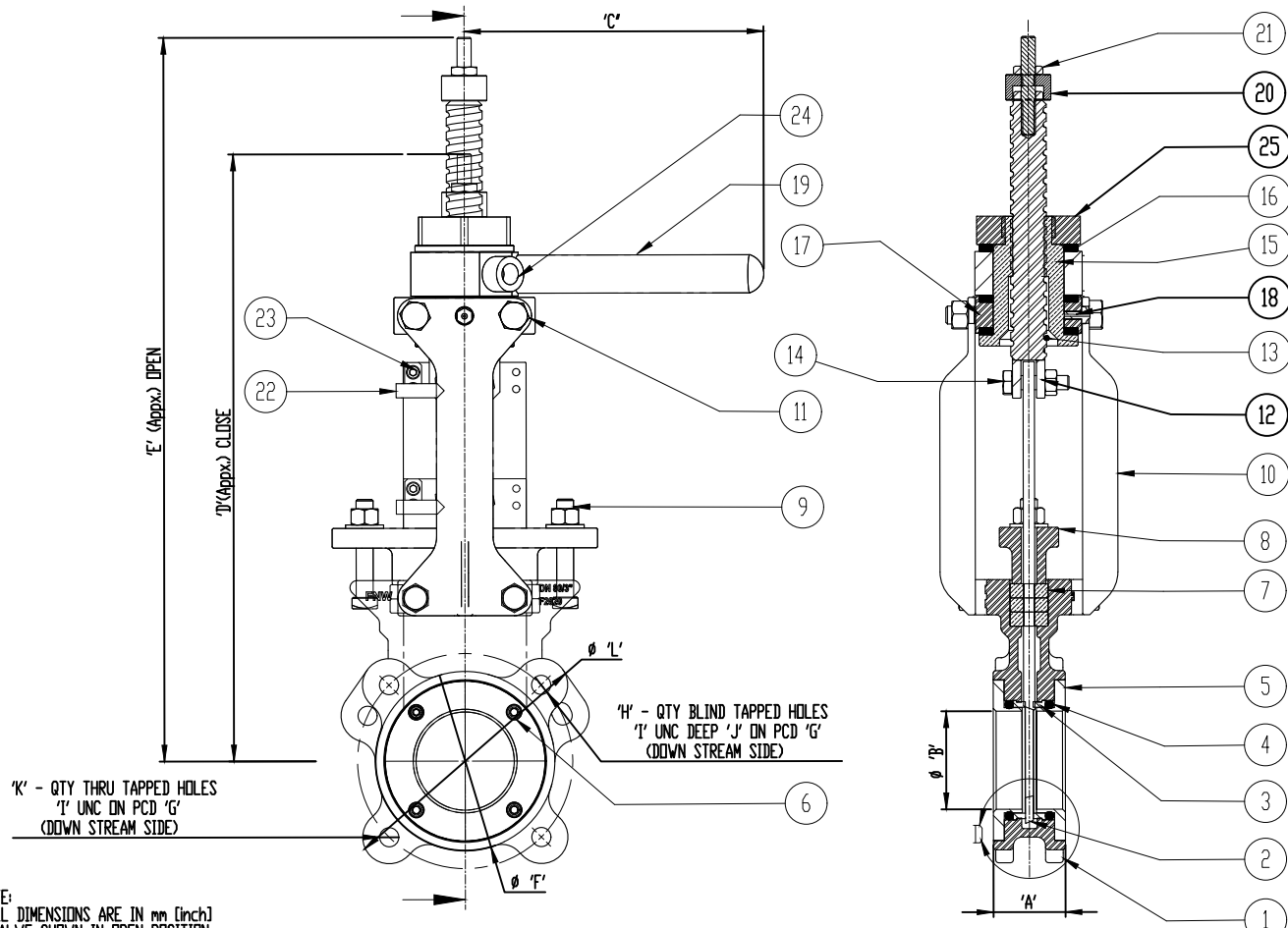
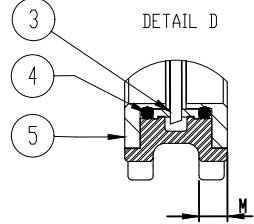


TEST DATA					VALVE SIZE	A	K	Ø B	Ø C	D	E	Ø F	Ø G	H	I	J	Ø L	M (MINIMUM)	Ø P	R	
TEST	PRESSURE ps(bar)	DURATION (sec)	ACCEPTANCE NDRM	TEST FLUID	REMARKS	80 [3"]	51.0 [2.00]	2	69.5 [2.74]	203.0 [8.00]	420.0 [16.54]	503.0 [19.80]	127.0 [5.00]	152.5 [6.00]	2	5/8"-11	10.0 [0.39]	190.0 [7.50]	12.7 [0.50]	13.5	4
BODY	218(15)	60	NO LEAK	WATER	BEFORE ASSEMBLY																
SEAT	160(11)	60	NO VISIBLE LEAK	WATER	AFTER ASSEMBLY																



25	LOCK NUT	ST. STEEL 304
24	LOCKING PIN	ASTM A 276 Gr. 304
23	BOLT & NUT, NYLOCK (Arrow indicator)	ST. STEEL 304
22	ARROW INDICATOR	ASTM A 240 Gr.304
21	FASTENERS (Stem & Stopper)	ASTM A 193 Gr.B8/ASTM A 194 Gr.8
20	STOPPER	ASTM A 276 Gr.304
19	RATCHET LEVER	CARBON STEEL ASTM A 36
18	GREASE NIPPLE	BRASS
17	COLLAR	ASTM A 240 Gr.SS 304
16	THRUST NEEDLE BEARING	STAINLESS STEEL
15	YOKE SLEEVE	ASTM B 148 Gr. C95200
14	BOLT & NUT, NYLOCK (Clevis)	ST. STEEL 304
13	STEM	ASTM A 276 Gr.304
12	CLEVIS	ASTM A 351 Gr.CF8
11	BOLTS (Yoke)	ST. STEEL 304
10	YOKE	ASTM A 351 Gr.CF8
9	BOLT & NUT, NYLOCK (Gland)	ST. STEEL 304
8	GLAND	ASTM A 351 Gr.CF8M
7	PACKING	PTFE WITH ONE LAYER OF EPDM QUAD SEAL
6	FASTENERS (Retainer Ring & Body)	ASTM A 193 Gr.B8M
5	RETAINER RING	ASTM A 351 Gr.CF8M
4	O-RING	EPDM
3	SEAT RING	RTFE
2	GATE	ASTM A 240 Gr.316
1	BODY	ASTM A 351 Gr.CF8M

NOTE:
 1. ALL DIMENSIONS ARE IN mm (inch)
 2. VALVE SHOWN IN OPEN POSITION
 3. PCD, SIZE OF BOLT HOLE, NO OF BOLTS TO SUIT ANSI B 16.5 Class 150 FLANGES
 4. VALVE SHALL BE PAINTED WITH TWO PACK BLUE EPOXY PAINT ON ALL NON STAINLESS STEEL PARTS
 5. VALVE INTERNALS ARE SHOWN FOR REFERENCE ONLY
 6. FACE TO FACE AS PER MSS-SP-81
 NPS 10 (DN250) AND SMALLER ±0.06 IN. (±1.6)

FNW		NAME	DATE
		DRAWN	
		CHD	
SCALE		SIZE : 3"	MODEL : 2020TIV
TITLE:-		DRAWING NUMBER	
BI-DIRECTIONAL RESILIENT SEATED KNIFE GATE VALVE WITH RATCHET HANDLE		REV	